

Appendix 6: EPA Tools for Understanding Air Quality

National Emissions Inventory <https://www.epa.gov/air-emissions-inventories/national-emissions-inventory-nei>

The National Emissions Inventory (NEI) is a comprehensive and detailed estimate of air emissions of criteria pollutants, criteria precursors, and hazardous air pollutants from air emissions sources. The NEI is released every three years based primarily upon data provided by State, Local, and Tribal air agencies for sources in their jurisdictions and supplemented by data developed by the US EPA. The EPA has developed a number of tools that help understand the data from the NEI and other sources.

[AirCompare](#)

[AirData](#)

[EJSCREEN](#): Environmental Justice Mapping Tool

[EnviroMapper](#)

[EPA Green Book](#)

[NATA](#) (National Air Toxics Assessment map)

[State and Local Multi-pollutant Emissions Comparison](#)

AirCompare <https://www3.epa.gov/aircompare/>

AirCompare allows the comparison of air quality in counties and states by health concern and time period.

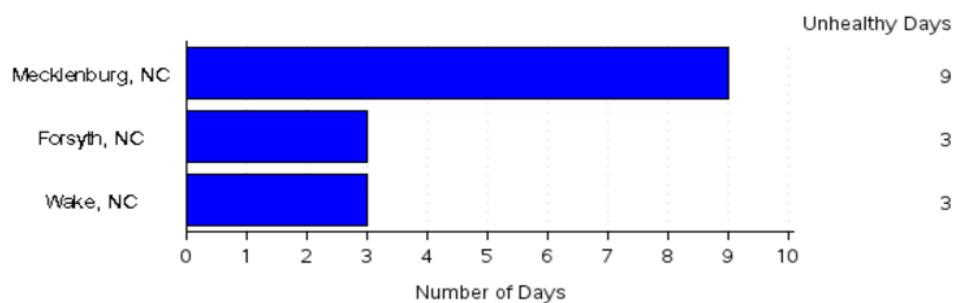


Chart showing the number of unhealthy days in 2015 for asthma and lung diseases that was developed by the Air Compare tool.

AirData <https://www.epa.gov/outdoor-air-quality-data>

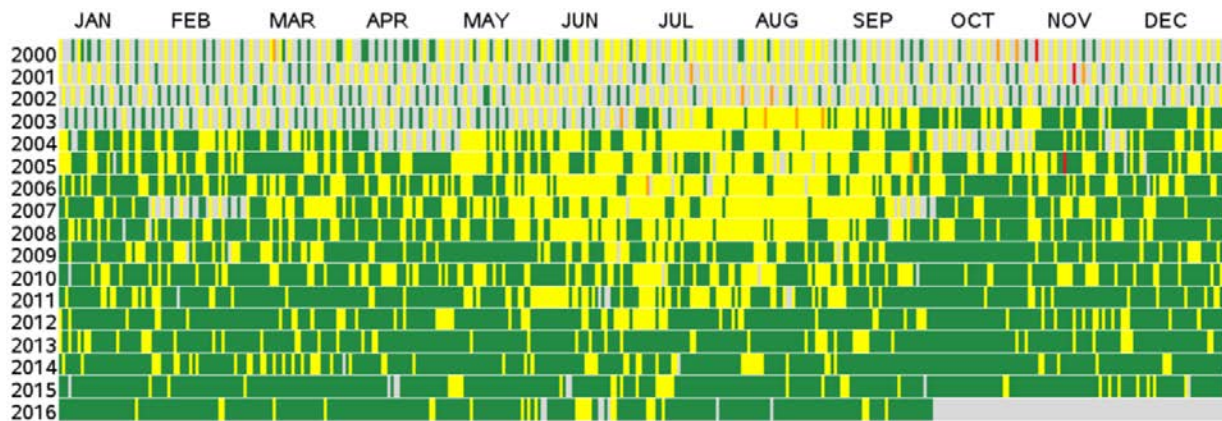
The AirData tool provides access to various air pollution data from 1980 to the present, and different ways to visualize these data.

There are four main parts of the AirData website:

1. Download Data: Such as downloading the daily concentrations of the criteria pollutants.
2. Reports (Summary and Technical): Such as see the statistical summaries of yearly and daily Air Quality Index (AQI) of a selected county/city.
3. Visualize Data: Such as see the daily concentrations of air pollutants and its AQI.
4. Interactive Map: Such as see where air quality monitors are located, get information about the monitor, and download data from the monitor.

↕ CBSA	#Days with AQI	#Days Good	#Days Moderate	#Days Unhealthy for Sensitive Groups
Asheville, NC	363	282	80	1

Chart reporting 2015 air quality data in Asheville, NC from the AirData tool.



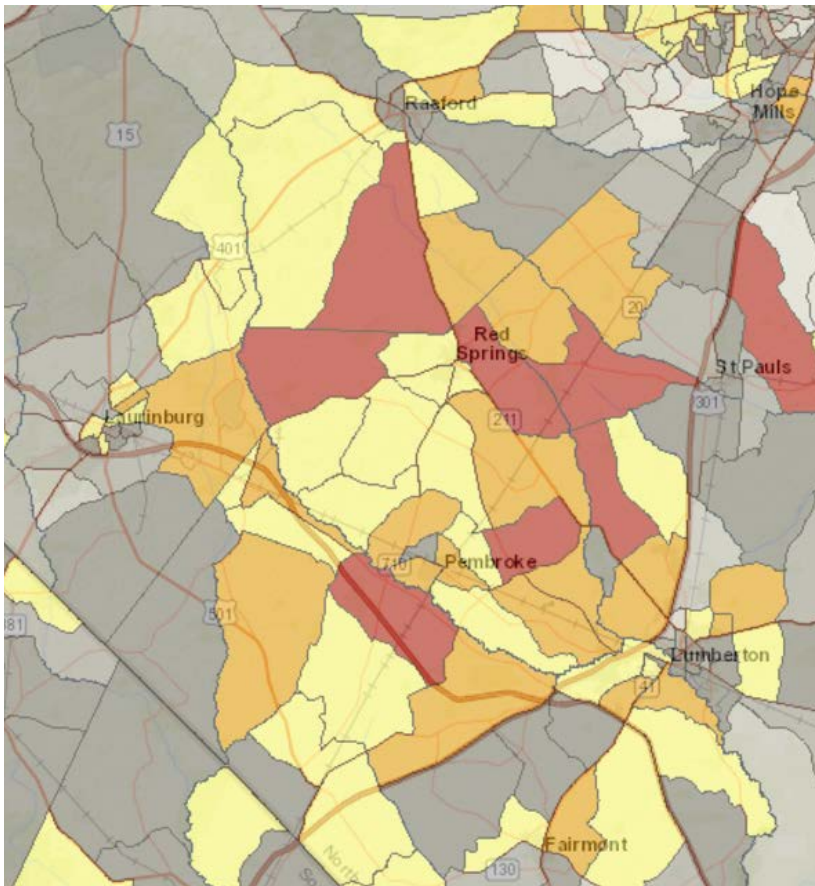
Visualization of daily AQI values for PM2.5 in Asheville, NC from the AirData tool.

EJSCREEN: Environmental Justice Mapping Tool

<https://ejscreen.epa.gov/mapper/>

EJScreen is an environmental justice mapping and screening tool that provides EPA with a nationally consistent dataset and approach for combining environmental and demographic indicators. You can choose a geographic area; the tool then provides demographic and environmental information for that area. This tool may help you identify areas with:

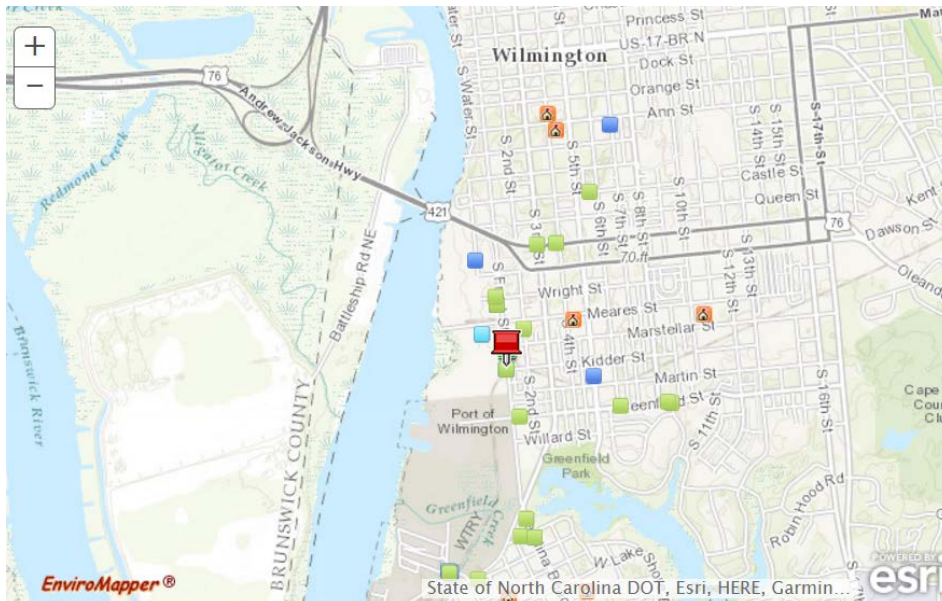
- Minority and/or low-income populations
- Potential environmental quality issues
- Greater than normal combination of environmental and demographic factors



Map showing percentiles of vulnerable populations in proximity to PM2.5 near Lumberton, NC using EJScreen.

EnviroMapper <http://www.epa.gov/emefdata/em4ef.home>

EnviroMapper is an interactive mapping tool for viewing and querying environmental information. The application allows users to zoom in to an area, or enter a state, county, city, ZIP code, or watershed to view environmental data from EPA's Envirofacts Warehouse. The type of environmental information includes: Superfund sites, drinking water, toxic and air releases, hazardous waste, and water discharge permits. You can also view this information in context by adding map features to your map, such as major roads, hospitals, and schools.



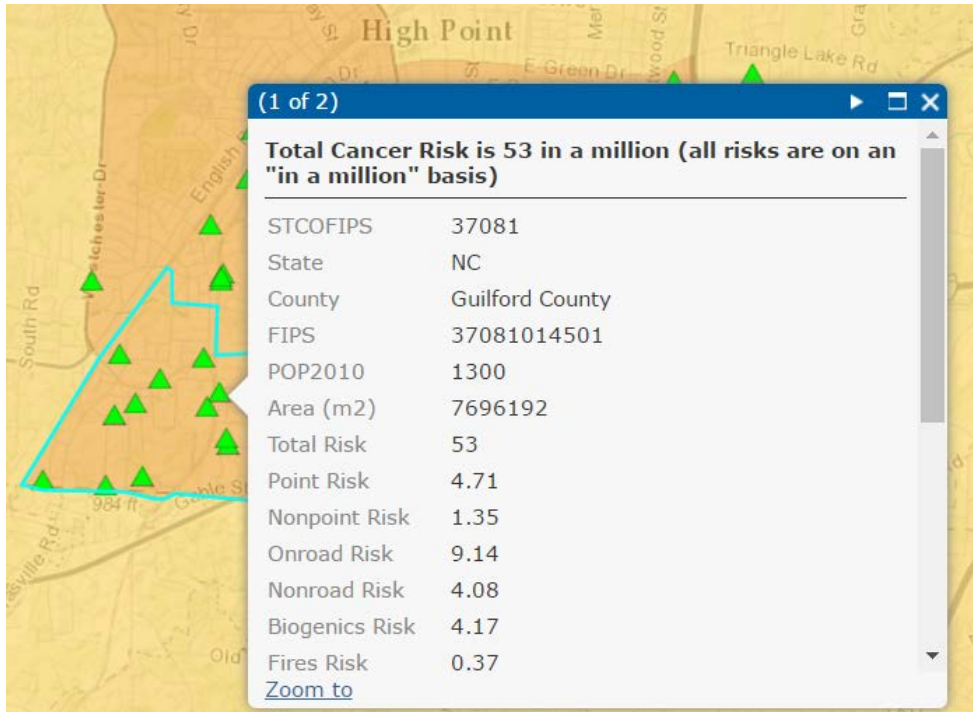
Map showing proximity of polluting facilities to schools near the port of Wilmington using EnviroMapper.

EPA Green Book <https://www.epa.gov/green-book>

The EPA Green Book provides detailed information about area NAAQS designations, classifications and nonattainment status.

NATA (National Air Toxics Assessment map) <https://gispub.epa.gov/NATA/>

Air toxics include chemicals such as asbestos, dioxin, and methyl mercaptan. The National Air Toxics Assessment (NATA) map shows risks, emissions and monitoring data for toxic air emissions. It also allows for querying and downloading data. Map layers include emission sources, cancer risks, respiratory hazards and air pollutant concentrations.

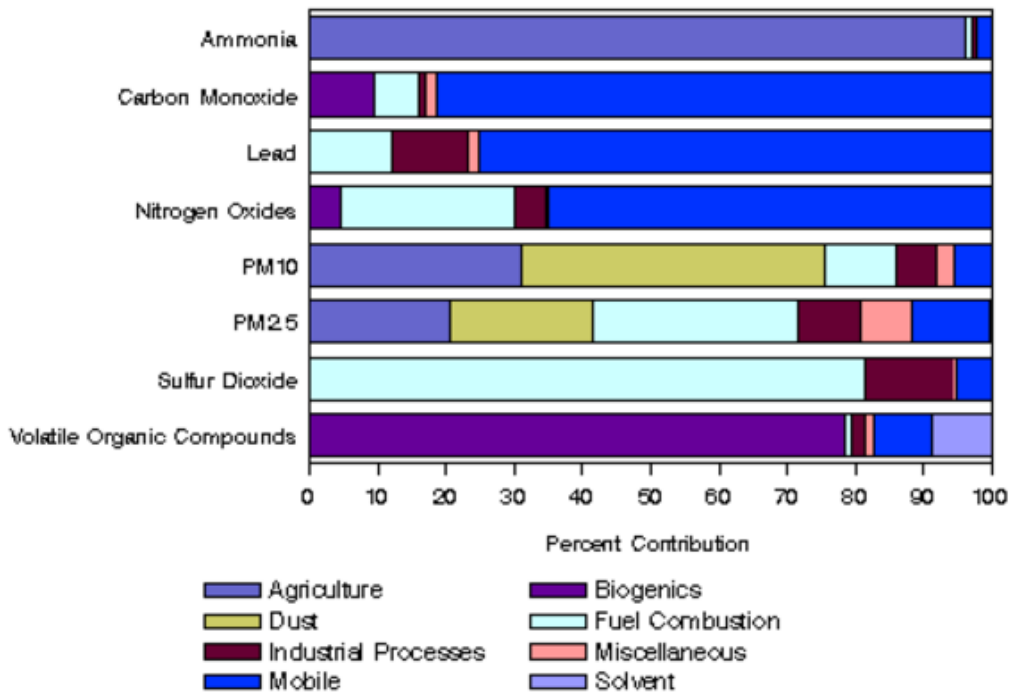


Data describing cancer risk from air toxics in a region of Guilford County using the National Air Toxics Assessment (NATA).

State and Local Multi-pollutant Emissions Comparison <https://www.epa.gov/air-emissions-inventories/multi-pollutant-comparison>

This tool provides a comparative view the emissions and their sources at state and county levels.

Multipollutant Emissions Comparison by Source Sector
in North Carolina in 2014



Comparison of emissions in 2014 statewide using the Multipollutant Emissions Comparison Tool